

Åländsk simstatistik

Topp 20 simmare

FINA-poäng

År	Högsta	Lägsta	Medel
2000	652	225	433
2001	673	273	447
2002	655	343	485
2003	656	353	484
2004	679	354	496
2005	663	396	517
2006	683	369	494
2007	699	331	482
2008	714	363	507
2009	687	413	522
2010	627	401	473
2011	642	366	460
2012	657	380	476
2013	632	374	464
2014	650	358	475
2015	622	354	482
2016	672	300	432
2017	686	341	462
2018	644	323	443
2019	576	340	435
2020	498	290	379

Bassäng

År	25	50
2000	18	2
2001	18	2
2002	19	1
2003	20	0
2004	20	0
2005	17	3
2006	16	4
2007	14	6
2008	15	5
2009	16	4
2010	20	0
2011	18	2
2012	17	3
2013	17	3
2014	15	5
2015	14	6
2016	14	6
2017	14	6
2018	11	9
2019	15	5
2020	20	0

Åldersfördelning

År	Högsta	Lägsta	Medel	<15	16-20	>20
2000	29	12	16	8	11	1
2001	43	13	19	5	11	4
2002	36	11	20	2	12	6
2003	37	12	21	2	9	9
2004	38	13	20	3	9	8
2005	42	14	21	2	9	9
2006	43	11	22	2	11	7
2007	44	12	19	7	10	3
2008	45	13	19	6	10	4
2009	46	13	20	5	11	4
2010	47	14	20	2	15	3
2011	48	12	20	2	15	3
2012	49	13	21	3	11	6
2013	50	12	21	5	10	5
2014	51	12	23	2	13	5
2015	52	13	23	4	10	6
2016	53	11	21	6	11	3
2017	54	12	21	4	12	4
2018	42	13	18	7	10	3
2019	56	14	24	4	10	6
2020	55	13	22	2	13	5

Könsfördelning

År	Dam	Herr
2000	11	9
2001	10	10
2002	8	12
2003	6	14
2004	9	11
2005	11	9
2006	13	7
2007	14	6
2008	12	8
2009	13	7
2010	12	8
2011	11	9
2012	13	7
2013	12	8
2014	13	7
2015	14	6
2016	14	6
2017	11	9
2018	11	9
2019	13	7
2020	15	5

Distanser

År	50	100	200	400	800/1500
2000	17	1	2	0	0
2001	9	9	1	1	0
2002	14	4	1	1	0
2003	16	3	0	1	0
2004	16	4	0	0	0
2005	14	3	3	0	0
2006	13	4	3	0	0
2007	11	7	2	0	0
2008	14	4	2	0	0
2009	10	6	4	0	0
2010	12	5	1	1	1
2011	10	6	3	1	0
2012	7	4	6	2	1
2013	12	2	6	0	0
2014	10	6	1	3	0
2015	10	4	3	2	1
2016	14	3	3	0	0
2017	14	2	3	0	1
2018	15	4	0	0	1
2019	16	2	1	0	1
2020	9	7	4	0	0

Simsätt

År	Fjärilsim	Ryggsim	Bröstsims	Frisim	Medley
2000	1	1	5	13	0
2001	1	2	8	7	2
2002	3	2	2	9	4
2003	3	0	3	13	1
2004	2	1	5	12	0
2005	2	1	7	10	0
2006	4	0	6	9	1
2007	3	0	5	11	1
2008	1	2	4	13	0
2009	1	1	5	11	2
2010	0	0	6	12	2
2011	2	1	3	13	1
2012	0	2	2	14	2
2013	5	1	3	9	2
2014	4	0	3	11	2
2015	3	1	4	12	0
2016	2	0	2	15	1
2017	3	0	4	12	1
2018	5	1	5	9	0
2019	3	2	5	8	2
2020	2	2	3	12	1

Åländsk simstatistik

Topp 100 resultat

FINA-poäng

År	Högsta	Lägsta	Medel
2000	652	465	526
2001	673	484	535
2002	655	465	527
2003	656	509	561
2004	679	523	571
2005	663	516	570
2006	683	510	578
2007	699	493	558
2008	714	544	604
2009	687	516	577
2010	627	479	531
2011	642	494	539
2012	657	498	549
2013	632	476	542
2014	650	485	530
2015	622	497	536
2016	672	509	558
2017	686	509	591
2018	644	473	520
2019	576	458	499
2020	498	311	371

Bassäng

År	25	50
2000	82	18
2001	88	12
2002	85	15
2003	100	0
2004	73	27
2005	79	21
2006	78	22
2007	65	35
2008	65	35
2009	78	22
2010	83	17
2011	75	25
2012	76	24
2013	86	14
2014	60	40
2015	80	21
2016	66	35
2017	74	27
2018	51	49
2019	78	22
2020	100	0

Unika simmare

År	Dam	Herr
2000	3	3
2001	5	5
2002	5	8
2003	3	6
2004	4	4
2005	6	5
2006	5	3
2007	6	2
2008	4	3
2009	6	4
2010	6	2
2011	4	3
2012	2	4
2013	4	2
2014	7	1
2015	6	2
2016	3	0
2017	3	1
2018	5	5
2019	4	3
2020	12	6

Åldersfördelning

År	Högsta	Lägsta	Medel	<15	16-20	>20
2000	29	16	18	0	93	7
2001	30	14	22	1	63	36
2002	36	13	22	1	72	27
2003	37	14	24	1	58	41
2004	38	15	22	0	71	29
2005	39	16	22	0	37	63
2006	40	15	19	0	77	23
2007	23	12	17	11	77	12
2008	24	13	18	11	76	13
2009	46	14	19	6	77	17
2010	47	14	17	12	86	2
2011	27	15	18	0	90	10
2012	28	16	22	0	64	36
2013	29	14	22	6	48	46
2014	30	12	22	2	58	40
2015	31	13	19	28	47	26
2016	17	14	15	52	49	0
2017	24	14	17	1	83	17
2018	25	13	18	3	88	9
2019	25	14	17	18	80	2
2020	55	13	22	2	74	24

Könsfördelning

År	Dam	Herr
2000	67	33
2001	52	48
2002	54	46
2003	58	42
2004	57	43
2005	47	53
2006	42	58
2007	72	28
2008	49	51
2009	53	47
2010	28	72
2011	33	67
2012	54	46
2013	85	15
2014	98	2
2015	97	4
2016	101	0
2017	84	17
2018	87	13
2019	73	27
2020	57	43

Distanser

År	50	100	200	400	800/1500
2000	46	40	13	1	0
2001	46	27	21	6	0
2002	56	28	10	5	1
2003	49	27	17	3	4
2004	40	36	22	2	0
2005	42	40	17	1	0
2006	40	40	18	2	0
2007	43	39	18	0	0
2008	45	41	14	0	0
2009	50	26	19	3	2
2010	37	39	20	4	0
2011	34	30	26	8	2
2012	26	29	32	11	2
2013	34	24	33	7	2
2014	40	35	19	4	2
2015	40	31	17	8	5
2016	35	35	15	9	7
2017	58	23	11	5	4
2018	58	34	7	0	1
2019	47	25	9	10	9
2020	44	37	14	1	4

Simsätt

År	Fjärilsim	Ryggsim	Bröstsims	Frisim	Medley
2000	17	16	31	30	6
2001	15	19	14	36	16
2002	21	19	10	39	11
2003	22	13	12	46	7
2004	21	13	27	34	5
2005	22	11	22	37	8
2006	16	9	28	36	11
2007	23	4	32	33	8
2008	16	4	26	52	2
2009	22	3	18	54	3
2010	14	9	8	51	18
2011	20	10	0	52	18
2012	23	5	12	41	19
2013	27	16	10	34	13
2014	25	14	10	41	10
2015	21	7	3	61	8
2016	21	3	0	69	7
2017	30	0	1	66	3
2018	29	7	15	41	8
2019	16	8	8	59	9
2020	15	10	11	57	7

Åländsk simstatistik

300+ FINA

Fördelning

År	>700	>600	>500	>400	>=300
2000	0	1	5	7	2
2001	0	1	6	6	4
2002	0	1	10	7	5
2003	0	1	9	6	6
2004	0	2	7	9	7
2005	0	2	12	4	10
2006	0	2	6	9	9
2007	0	3	5	7	9
2008	1	5	4	5	12
2009	0	5	6	11	10
2010	0	1	6	13	7
2011	0	1	6	9	11
2012	0	2	4	9	14
2013	0	3	2	9	16
2014	0	1	4	12	7
2015	0	2	5	9	11
2016	0	2	2	7	9
2017	0	3	3	8	11
2018	0	1	4	6	13
2019	0	0	5	8	13
2020	0	0	0	8	11

Bassäng

År	25m	50m
2000	13	2
2001	15	2
2002	22	1
2003	22	0
2004	25	0
2005	24	4
2006	22	4
2007	17	7
2008	22	5
2009	24	8
2010	27	0
2011	25	2
2012	25	4
2013	26	4
2014	19	5
2015	19	8
2016	14	6
2017	19	6
2018	14	10
2019	19	7
2020	19	0

Åldersfördelning

År	Högsta	Lägsta	Medel	<15	16-20	>20
2000	29	13	17	4	10	1
2001	30	13	18	4	10	3
2002	36	11	20	2	15	6
2003	37	12	20	4	9	9
2004	38	13	19	7	10	8
2005	47	10	21	6	11	11
2006	43	11	20	5	14	7
2007	44	11	18	9	12	3
2008	45	12	18	11	11	5
2009	46	12	20	9	14	9
2010	47	13	19	4	19	4
2011	48	12	19	4	19	4
2012	49	13	21	4	16	9
2013	50	11	22	6	15	9
2014	51	12	22	4	14	6
2015	52	13	21	6	14	7
2016	53	11	21	6	11	3
2017	54	12	21	7	13	5
2018	42	11	17	10	11	3
2019	56	13	22	9	11	6
2020	55	13	22	2	12	5

Könsfördelning

År	Dam	Herr
2000	9	6
2001	8	9
2002	9	14
2003	8	14
2004	13	12
2005	18	10
2006	17	9
2007	16	8
2008	16	11
2009	19	13
2010	17	10
2011	17	10
2012	17	12
2013	19	11
2014	17	7
2015	18	9
2016	14	6
2017	14	11
2018	14	10
2019	17	9
2020	13	6

Distanser

År	50	100	200	400	800/1500
2000	13	0	2	0	0
2001	8	7	1	1	0
2002	17	4	1	1	0
2003	17	4	0	1	0
2004	21	4	0	0	0
2005	21	4	3	0	0
2006	18	4	3	1	0
2007	13	9	2	0	0
2008	21	4	2	0	0
2009	15	10	6	0	1
2010	18	5	1	2	1
2011	12	8	5	2	0
2012	13	6	6	2	2
2013	19	3	6	1	0
2014	13	7	1	3	0
2015	16	4	3	3	1
2016	14	3	3	0	0
2017	17	2	4	1	1
2018	17	4	1	1	1
2019	21	2	2	0	1
2020	9	6	4	0	0

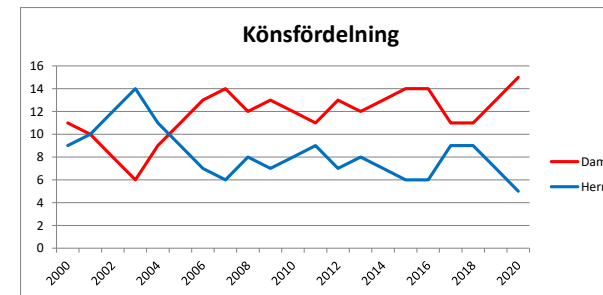
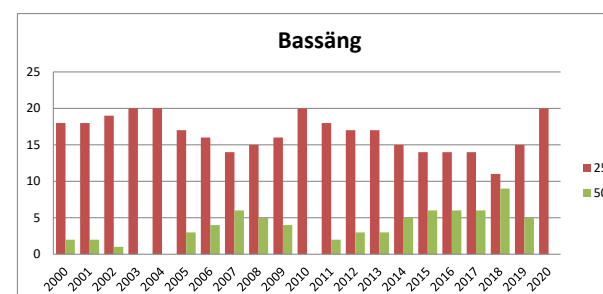
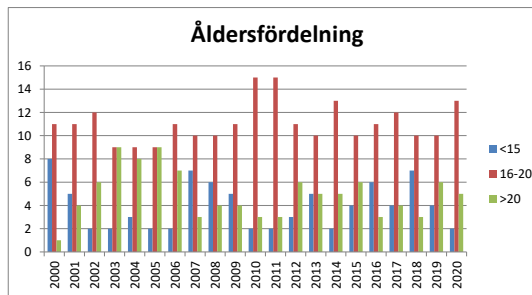
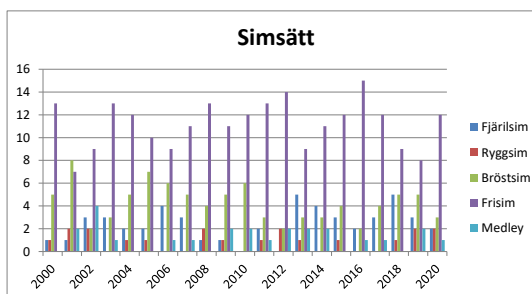
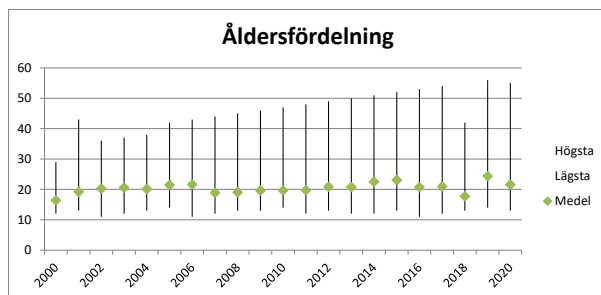
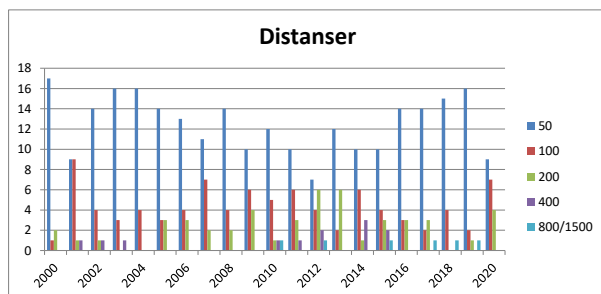
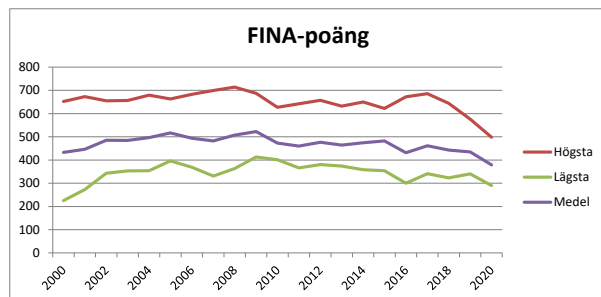
Simsätt

År	Fjärilsim	Ryggsim	Bröstsims	Frisim
2000	1	1	3	10
2001	1	2	6	6
2002	3	2	4	10
2003	3	0	4	13
2004	2	1	6	16
2005	2	1	8	17
2006	5	0	6	14
2007	3	0	5	14
2008	1	3	5	18
2009	2	2	6	17
2010	0	0	6	19
2011	2	1	3	20
2012	0	2	2	22
2013	5	1	3	18
2014	4	0	3	15
2015	3	1	4	19
2016	2	0	2	15
2017	3	1	4	15
2018	5	1	7	11
2019	3	2	6	13
2020	2	2	3	11

Medley
0
2
4
2
0
0
1
2
0
5
2
1
3
3
2
0
1
2
0
2
1

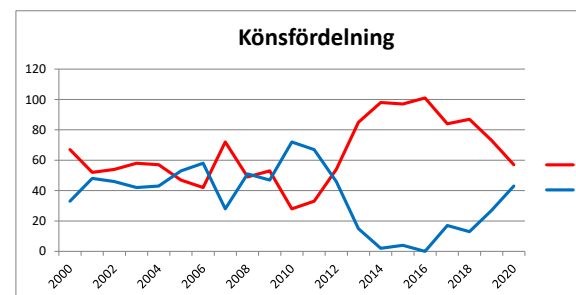
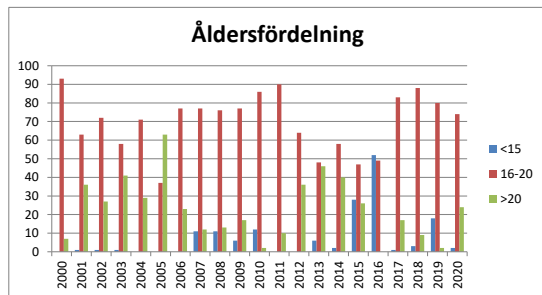
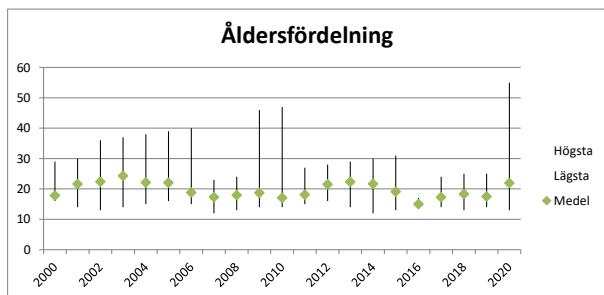
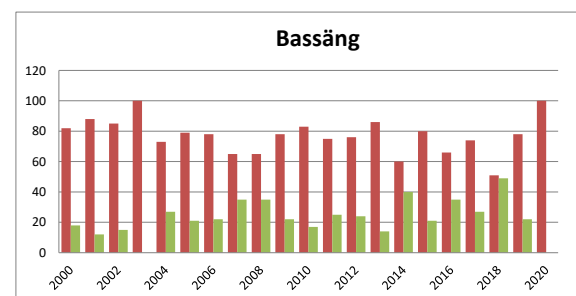
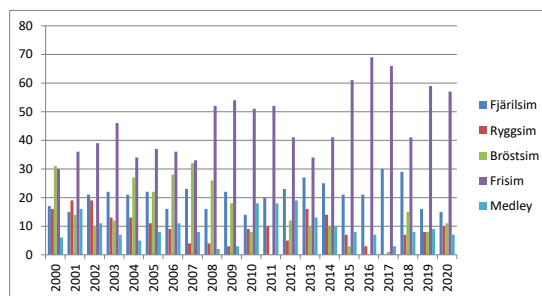
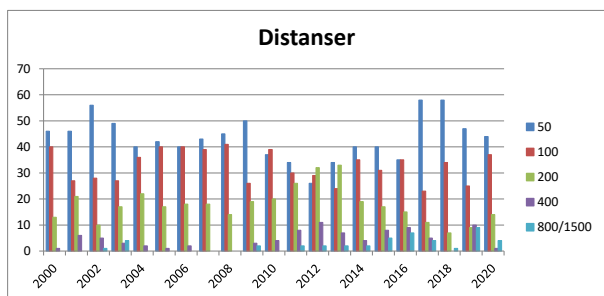
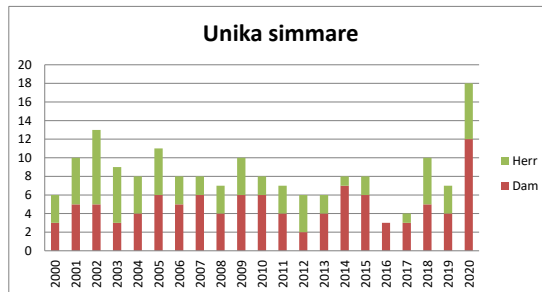
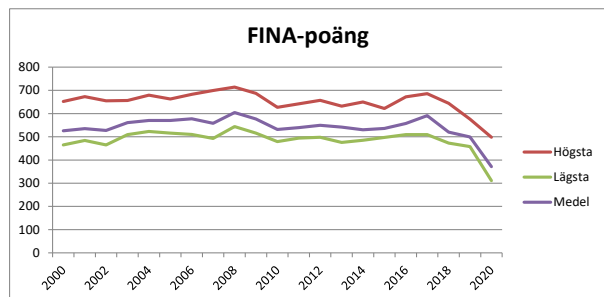
Åländsk simstatistik

Topp 20 simmare



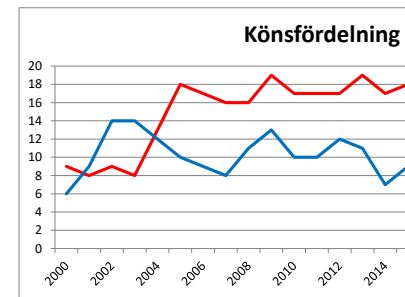
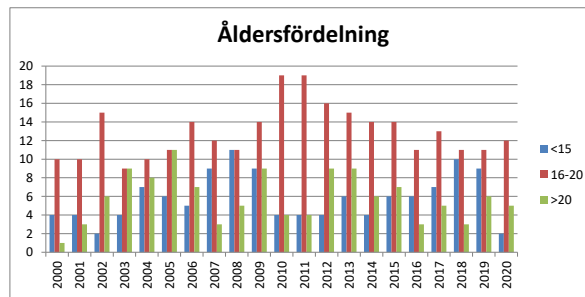
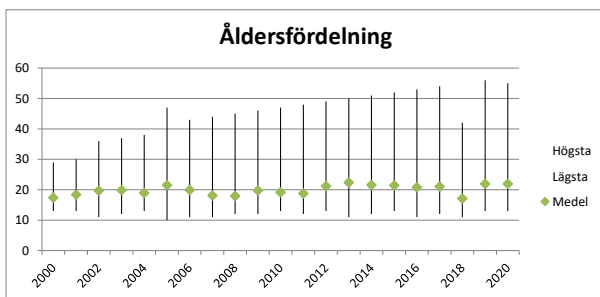
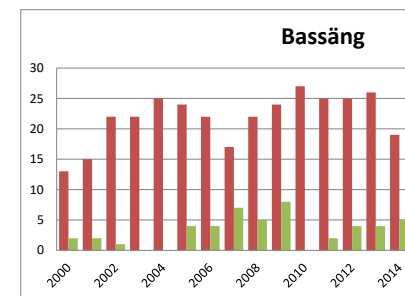
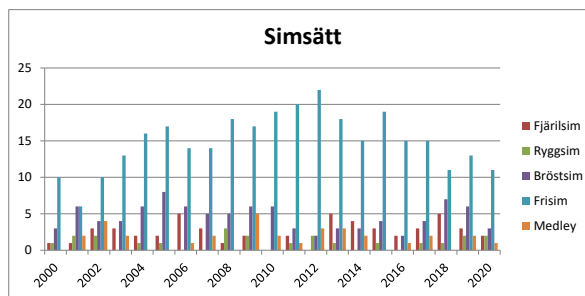
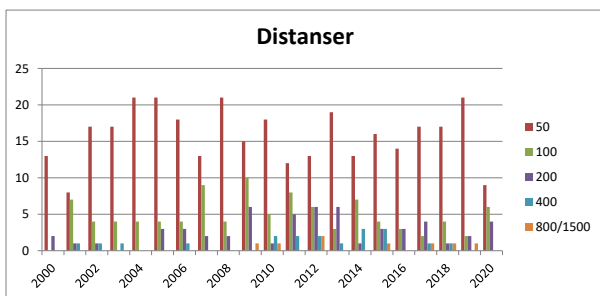
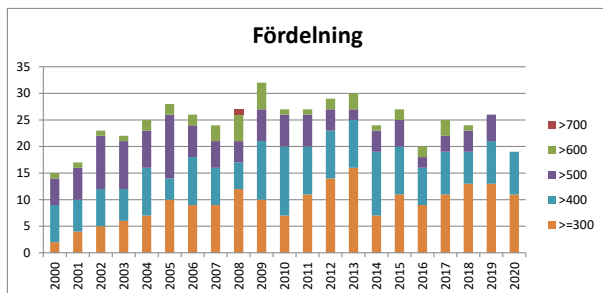
Åländsk simstatistik

Topp 100 resultat



Åländsk simstatistik

300+ FINA



25
50

im
:rr

